

## Special Tools & Accessories

### Isolator Tool™

- For Isolators, Containment and Bio-Hoods in Cleanroom and Buffer Areas
- Low Profile Design
- Angled head for easy application of disinfectant or detergent
- Modular and extendable handles for small pass thrus and extended “reach”
- Launderable/Autoclavable Slipcovers
- Slipcovers Available Irradiated



Part No.	Description
QDIT-09	9" Stainless Steel Isolator Tool
QPIT-09	9" Plastic Isolator Tool
STAH-12WH	12" Plastic Handle
ITC11-9NS	PolySorb Cover, Envelope style (no elastic or snaps)
ITC620-9	Polyester/MegaTex Cover
ITC6-9	Polyester Cover
ITCAA-9	Blue Microfiber Cover
ITCAW-9	White Microfiber Cover

*Available irradiated – add IR to end of part number. Covers available with foam interior for increased absorbency.*



### MegaSwat™ Adapter

For applications cleaning around heavy process equipment or calibrated apparatus. Features a flexible polyethylene interior with a choice of slip covers.

Part No.	Description
QDMS-16	MegaSwat Adapter 2.5" x 16" Blade
MS1-16NS	MegaSwat Cover – PVA
MS2-16NS	MegaSwat Cover – NovaLite
MS6-16NS	MegaSwat Cover – NovaPoly
MCAA-16NS	MegaSwat Cover – Microfiber
QDMS-8	MegaSwat Adapter 3" x 8" Blade
MS6-8	MegaSwat Cover – NovaPoly
MCAA-8	MegaSwat Cover – Microfiber

*Custom sizes available  
Polyester covers available irradiated, add IR to end of part number when ordering.*



### Curtain Cleaner™

A simple, effective design to clean cleanroom curtains and softwall enclosures. The cleaning head clamps the curtain at the top and then slides down to apply or squeegee the cleaning agent on both sides of the curtain. The Curtain Cleaner measures 12" and has a selection of different slipcovers for cleaning in cleanroom support, critical and sterile environments.

Part No.	Description
CCH-24	Curtain Cleaner (24" length)
CCH-48	Curtain Cleaner (48" length)
CCSC-1	PVA Slipcover
CCSC-2	NovaLite Slipcover
CCSC-6	NovaPoly Slipcover
CCSC-6IR	NovaPoly Slipcover Irradiated
CCSC-68	PolyMesh Slipcover
CCSC-20	MegaTex Slipcover
CCSC-AA	MicroFiber Slipcover



### NovaSqueegee™ Adapter

Squeegee adapter for cleaning walls, windows and screens. Sold with a standard rubber blade, PVA replacement blade optional. 12", 18" and 22" widths available. NovaSqueegee adapter attaches to the SSU series of handles. Autoclavable.

Part No.	Description
QDNS-12, 18, & 22	NovaSqueegee Adapter 12", 18" & 22" Blade
NS-12, 18, & 22	12", 18" & 22" PVA Blade
RS-12, 18, & 22	12", 18" & 22" Rubber Blade



### MegaTip™ Swab

A substantial cleaning “swab,” the MegaTip is a 4" x 1.5" probe which, when used with the Univesal Handle, will easily reach to clean lighting recesses, corners and angles between walls and ceilings and other areas where a mop or wiping area is not ideal.

Custom sizes available.

Part No.	Description
QDMT-1	MegaTip Adapter, 9" long
MT-1	MegaTip Cover - PVA
MT-2	MegaTip Cover - NovaLite
MT-6	MegaTip Cover - NovaPoly
MT-6IR	MegaTip Cover - NovaPoly Irradiated



### FlexBrush Adapter

12" bendable brush with polyester or microfiber cover. Use with extendable handle or stand alone for cleaning overhead pipes, coving and deep tanks. Acme threaded end. Covers are autoclavable.

Part No.	Description
FB-12	FlexBrush Adapter Zinc/Polypropylene
BRWM-22512J	FlexBrush Adapter Stainless Steel
FBC-611	NovaPoly Cover
FBC-611IR	NovaPoly Cover Irradiated
FBC-AA	Microfiber Cover



### Econo CurtainCleaner™

- Simple and efficient method for cleaning strip curtains
- Cleans both sides in one pass
- Covers are Launderable and Autoclavable
- Attaches to SSU series handles.

Part No.	Description
QDECC-14	Econo CurtainCleaner Adapter
SSU-1	38-72" Universal Handle
ECC6-14	Polyester Cover
ECC11-14	PolySorb Cover
ECCAA-14	Microfiber Cover

*Covers available irradiated – add IR to end of part number.*



### Tank Tool

- For cleaning tanks and cylinders
- Curved design provides better surface contact
- Covers available in a variety of fabrics

Part No.	Description
QDSLTT-14P	Tank Tool Adapter
QDSLRTT-14P	Reverse Tank Tool Adapter
MZSM6AA-14	Microfiber Cover



Additional variations available

### M-Zone MittWipes™

- Easily clean around carts, shelving, tanks, tubing and other hard to clean areas
- Added protection in cleanroom maintenance, LAR applications
- Secure cleaning for hard to reach areas
- 100% Polyester for standard use
- MegaTex fabric for heavily soiled or rough surfaces

Part No.	Description
MW-611	MittWipes Polyester w/foam interior
MW-2011	MittWipes MegaTex w/foam interior



### FlexBrush™ Adapter

- Clean overhead pipes, coving and deep tanks
- Bendable brush with polyester or microfiber cover
- Acme threaded end attaches to a variety of handles for extended reach

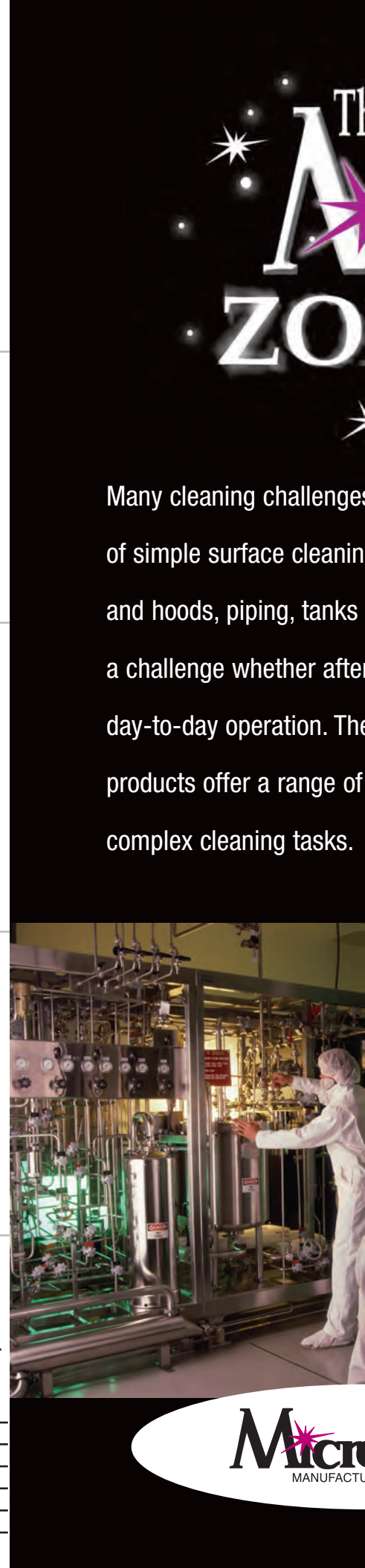
Part No.	Description
FB-12	12" Long FlexBrush Adapter
FBC-611	FlexBrush NovaPoly Cover
FBC-AA	FlexBrush Microfiber Cover



### Inspection Mirror

- Highly polished stainless steel mirror for inspecting hard to reach areas.
- Swivel connection attaches to any SSU series handle allowing the operator to run the unit behind equipment and fixtures to ensure all surfaces have been properly cleaned.
- Optional flashlight for use in tanks and other low light applications.

Part No.	Description
QDIST-66P	6 x 6" Inspection Mirror
SSU-1	38-72" Universal Handle
FLASH-01	LED Flashlight
FLASHH-01	Flashlight Holder (Clamp, attaches to QDIST-66P)
ISTSC11-66	Protective Storage Cover



THE  
A  
ZON

Many cleaning challenges of simple surface cleaning and hoods, piping, tanks a challenge whether after day-to-day operation. The products offer a range of complex cleaning tasks.



ne  
A  
NE™

s fall outside the realm

g. Isolators, safety cabinets

and chambers all pose

r shut down or during

e Micronova M-Zone™

tools to match these



onova®  
INC.

### LabMarkers™

- Alcohol resistant ink marks on cold or wet surfaces
- Permanent on most surfaces
- Fine Tip Black Ink
- Fast Drying
- Available Gamma Irradiated

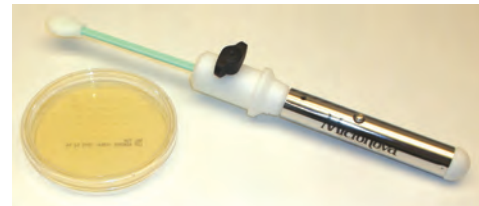
Part No.	Description
PEN-40	LabMarker
PEN-40IR	LabMarker Irradiated



### SwabHolder™

- Securely holds environmental monitoring swabs.
- Attaches to SSU series of handles for extended reach when monitoring in hard to access areas.

Part No.	Description
QDSWT-01	SwabHolder Tool
SSU-1	38-72" Universal Handle



### Autoclave Indicator Tape

- Lead Free, RoHS Compliant
- Wound on plastic core
- Green indicator lines change to black when proper levels of steam pressure & temperature are achieved

Part No.	Description
AUTOPC-1	1" x 60 Yards Autoclave Indicator Tape
<i>Additional sizes available</i>	

### SilSat™ Wipes

- Lubricates fill lines, gaskets and seals in isolators, refrigerators and cabinets in aseptic processing and support areas
- Polyester wipe impregnated with a blend of medical grade silicone and IPA
- Eliminates the use of messy spray lubricants in controlled areas
- Gamma Irradiated

Part No.	Description
SSW6-01IR	8 Count Pack SilSat Wipes



### Stainless Steel Cleaner

- No drip gel formula
- Phosphorus free, biodegradable
- Non atomized, will not impact air quality
- No VOCs
- NSF A7

Part No.	Description
SC1-P	Stainless Steel Cleaner



# Brushes

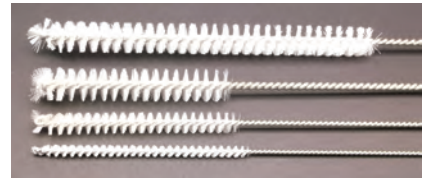
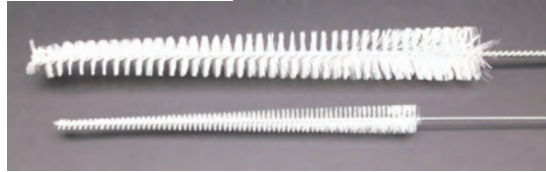
## Stainless Steel Wire Brushes with Nylon Bristles

Part No.	Brush Diameter	Brush Length	Overall Length	Bristle Stiffness	Type of Tip	Handle Type
BRWL-149 *	1/4"	5"	16"	Light	Fan Tip	Loop
BRWM-125 *	1/2"	5"	16"	Medium	Fan Tip	Loop
BRWL-349	3/4"	9"	20"	Light	Fan Tip	Loop
BRWM-345	3/4"	5"	16"	Medium	Fan Tip	Loop
BRWM-16BR	1"	6"	36"	Medium	Fan Tip	Plastic
BRWM-12572 *	1/2"	5"	72"	Medium	Polished Tip	Loop
BRWM-1572	1"	5"	72"	Medium	Polished Tip	Loop
BRWM-22	2"	2"	16"	Medium	Fan Tip	Loop
BRWM-22512S *	2 1/4"	12"	21"	Medium	Tufted Tip	Acme thread
BRWM-22512J *	2 1/4"	12"	16"	Medium	Tufted Tip	Acme thread
BRWL-14349	1/4 to 3/4"	9"	20"	Light	Fan Tip	Loop
BRWM-341512	3/4 to 1 1/2"	12"	28"	Medium	Fan Tip	Loop

\*Covers Available

**BRWM-22512S & BRWM-22512J** >>> Microfiber: FBC-6AA, Polyester: FBC-611, Poly Irradiated: FBC-611IR

**BRWL-149, BRWM-125, BRWM-12572** >>> Polyester Tube: BRSC52-6



## Interior Pipe & Vessel Cleaning

Brushes with Acme Threading for use with STA series handles

Brushes with Handles

### Cylinder Brush 7"

PolyMesh Cover  
PolyMesh Cover w/ties  
Polyester Cover

**BRWH-02**

BRSC68-02  
BRSC68-0211  
BRSC6-02



### Cylinder Brush 5"

PolyMesh Cover  
PolyMesh Cover w/ties  
PolySorb Cover

**BRWH-03**

BRSC68-03  
BRSC68-0311  
BRSC11-03



### Kettle Brush 5.25" x 7.5"

Polyester Cover  
PolyMesh Cover  
Microfiber/Poly Cover

**BRWH-41**

BRSC6-41  
BRSC68-41  
BRSC6AA-41



### Kettle Brush 6" x 10.5"

Microfiber Cover

**BRWH-42**

BRSCAA-42



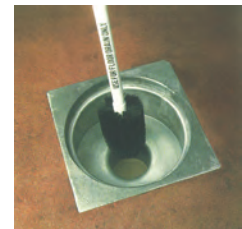
### Bottle Brushes

3.25" diameter with a 16" handle

Part No.	Description
BRWH-01	White Bottle Brush
BRDB-01	Blue Bottle Brush
BRDG-01	Green Bottle Brush
BRRE-01	Red Bottle Brush
BRYE-01	Yellow Bottle Brush
BRWH-40	5" Diameter White Bottle Brush



**Valve Brush 5" with 30" Handle**  
(BRWH-30)



**Drain Brush (BRBL-46)**  
Handle 36" (BRHFD-36)