

DuPont Controlled Environments

PRODUCT CATALOG



The miracles of science™

WHY DUPONT CONTROLLED ENVIRONMENTS?

BECAUSE we leverage the vast experience of DuPont to help ensure your controlled environment is as efficient as possible.

With DuPont Controlled Environments, you get the advantage of a wide range of proven, science-based solutions that help ensure superior protection for your business-critical systems, equipment, production processes and personnel.

If your industry standards call for sterility and/or cleanliness in pharmaceutical, biotechnology, electronics or medical device environments, our limited-use apparel lines could be just the contamination control solution you've been looking for.

In this catalog you will find current product specifications and ordering information for all DuPont Controlled Environments products, including: DuPont™ Tyvek® IsoClean™, DuPont™ Suprel® LS, DuPont™ ProClean®, DuPont™ Sontara® wipes, as well as shoe covers, boot covers, and other accessories in a variety of different fabrics.*

DuPont offers exceptional apparel manufacturing for environments where sterility and cleanliness are critical. From our ISO-registered facility to clean-processing, packaging and sterilization, DuPont products stand for high quality.

If you have any questions, you can contact a DuPont Controlled Environments specialist by calling 1-800-931-3456 (Monday through Friday, 8:30 AM to 5:30 PM, Eastern Standard Time). These industry specialists are more than happy to help you with site assessment, suggest educational programs and discuss a variety of contamination control issues. You can also visit our web site at www.PersonalProtection.DuPont.com.

DUPONT SERVICE COMMITMENT AND STOCKING PROGRAM

DuPont is committed to providing service-level excellence to all of our customers. This commitment includes a renewed focus on customer service, on-time delivery, sales/technical support and immediate access to product information. To help ensure the fastest delivery of products you need most, DuPont also offers an expanded stocking program. Details are provided on our web site at www.PersonalProtection.DuPont.com.

*Be advised that certain garments contained in this catalog description are subject to U.S. Export Control laws. Purchasing these garments subjects your company to those laws for export. For more information, contact us at 1-800-931-3456.

Contents

CONTROLLED ENVIRONMENTS GARMENTS AND ACCESSORIES

Tyvek® IsoClean™	4
Suprel® LS	6
ProClean®	8
Gripper™	9
SureStep™	10
Sierra®	11
General purpose products	11
RelyOn™	12
Sontara® wipes	13

GOWN SPECIFICATIONS

Seam construction	14
ISO 16644-1 Air Cleanliness	14
Minimum gowning requirements	14
Sizing chart	15





IC663B

IC181S

TYVEK® ISOCLEAN™

- Made from DuPont™ Tyvek® brand protective material
- Unique, patented flashspinning process creates an excellent barrier to dry particles, microorganisms and non-hazardous liquids
- Comfortable, lightweight and durable
- Garments available gamma sterilized to an SAL of 10⁻⁶
- Serged or bound seam with tunneled elastic options
- Full traceability on all sterilized apparel
- Recyclable
- Choose from:
 - CS** = Clean and Sterile: clean-processed, individually packaged and sterilized by gamma irradiation
 - OS** = Sterile: individually packaged and sterilized by gamma irradiation
 - OC** = Clean: clean-processed, individually packaged
 - OO** or **OB** = Bulk packaged
 - PI** = Individually packaged in cleanroom bags

coverall

IC148S OC 25/cs
IC148S OB 25/cs
 serged seams
 mandarin collar
 front zipper closure
 elastic wrists, ankles
 SM-4X



coverall

IC181S OC 25/cs
IC181S OO 25/cs
IC181S PI 25/cs
 serged seams
 front zipper closure
 elastic wrists, ankles
 SM-4X



coverall

IC182B CS 25/cs
IC182B OC 25/cs
IC182B OO 25/cs
 bound seams
 front zipper closure
 raglan sleeves
 tunneled elastic wrists, ankles
 SM-4X



coverall

IC179S OO* 25/cs
 serged seams
 attached hood
 front zipper closure
 attached socks*
 elastic wrists
 SM-5X



coverall

IC180S OO 25/cs
 serged seams
 attached hood
 front zipper closure
 elastic wrists, ankles
 SM-4X



coverall

IC195S CS 25/cs
IC195S OC 25/cs
IC195S OO 25/cs
 serged seams
 front zipper closure
 attached hood
attached thumb loops
 elastic wrists, ankles
 attached skid-resistant boots
 SM-4X



coverall

IC153B OO 25/cs
 elastic neck
 bound seams
 tunneled elastic wrist
 MD-2X



labcoat

IC221S OO 30/cs
 serged seams
 laydown collar
 three snap front
 elastic wrists
 two pockets
 SM-4X



**These Tyvek® IsoClean® garments have attached socks made of the garment material. These attached socks must be worn inside protective outer footwear and are not suitable as outer footwear. These attached socks do not have adequate durability or slip resistance to be worn as the outer sole for foot covering.*

For the DuPont Controlled Environments line of garments, small to 4X are identified as stock items. **Sizes 5X and above are identified as Make to Order.** Certain accessory items are also identified as Make to Order. Stock/Make to Order designations are based on sales volume and production efficiencies. Therefore, designations are subject to change without notice.

frock

IC267S 00 30/cs
IC267S PI 30/cs
 serged seams
 mandarin collar with snaps
 five snap front
 tunneled elastic wrists
 no pockets
 SM-5X (00)
 SM-2X (PI)



frock

IC270S CS 30/cs
IC270S OC 30/cs
IC270S OB 30/cs
 serged seams
 adjustable mandarin collar
 five snap front
 tunneled elastic wrists
 no pockets
 full-length
 SM-4X



frock

IC270B CS 30/cs
IC270B OC 30/cs
IC270B 00 30/cs
 bound seams
 bound neck with adjustable snaps
 five snap front
 tunneled elastic wrist
 SM-4X



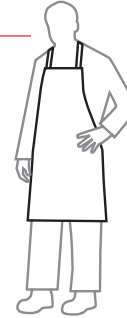
frock

IC271S CS 30/cs
IC271S OC 30/cs
IC271S OB 30/cs
 serged seams
 mandarin collar
 no pockets
 front zipper closure
 tunneled elastic wrists
 SM-4X



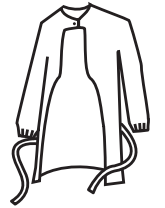
apron

TY282B 100/cs
 bib-style apron
 ties in back
 white
 28" x 36"



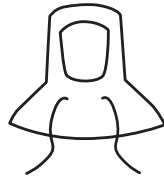
controlled environment gown

IC701S 00 30/cs
 knit cuffs
 splash resistant
 universal size



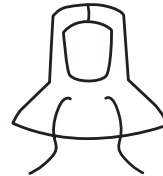
full-face hood

IC663B CS 100/cs
IC663B OC 100/cs
IC663B 00 100/cs
 bound seams
 full-face opening
 pulls over head
 ties in back
 MD-LG



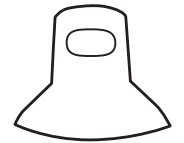
full-face hood

IC663B OB 100/cs
 bound seams
 full-face opening
 pulls over head
 side ties
 back snap
 seam in front (forehead)
 LG only



hood

IC666B CS 100/cs
IC666B OC 100/cs
IC666B 00 100/cs
 bound seams
 eyes-only opening
 pulls over head
 adjustment snaps in back
 MD-LG



bouffant

IC728S CS 150/cs
IC728S OC 150/cs
IC728S 00 150/cs
 bouffant
 24"
 serged seams
 universal size



sleeve protector

IC500S OS 100 pr/cs
IC500S OC 100 pr/cs
IC500S 00 100 pr/cs
IC500B CS 100 pr/cs
IC500B OC 100 pr/cs
IC500B OB 100 pr/cs
 serged seams
 bound seams
 tunneled elastic wrists
 18" length
 universal size



shoe covers

IC441S OB 100 pr/cs
 serged elastic top
 PVC soles
 SM-2X



Tyvek® IsoClean™ boot covers

IC444B CS 100 pr/cs
IC444B OC 100 pr/cs
IC444B OB 100 pr/cs
 bound seams
 tunneled elastic tops
 elastic ankles
 PVC soles
 20" high
 SM-XL



IC444S OB 100 pr/cs
 serged seams
 tunneled elastic tops
 elastic ankles
 PVC soles
 17" high
 SM-XL

Bound and sewn-in seams and closures have less barrier than fabric.

NOTE: All sizes not available in all styles.

WARNING: Cleanroom apparel should not be used around heat, flames, sparks or in potentially flammable or explosive environments. Cleanroom fabrics should have slip-resistant materials on the outer sole of boots, shoe covers or other garment surfaces in conditions where slipping could occur.



SR127S

SUPREL® LS

- Patented bi-component fabric based on DuPont™ Advanced Composite Technology
- Superior balance of breathability and barrier protection
- Soft feel for exceptional comfort
- Serged seams
- Garments available gamma sterilized to an SAL of 10⁻⁶
- Greater ease of movement
- Full traceability on all sterilized apparel
- Choose from:
 - OS** = Sterile: individually packaged and sterilized by gamma irradiation
 - OO** = Bulk packaged
 - WH** = White
 - BU** = Blue

coverall

SR148S WH OS 25/cs
SR148S WH OO 25/cs
 serged seams
 mandarin collar
 front zipper closure
 elastic wrists, ankles
 white
 SM-4X



coverall

SR181S WH OS 25/cs
SR181S WH OO 25/cs
 laydown collar
 front zipper closure
 elastic wrists, ankles
 white
 SM-4X



coverall

SR180S WH OO 25/cs
 elastic hood
 front zipper closure
 elastic wrists, ankles
 white
 SM-4X



coverall

SR127S WH OS 25/cs
SR127S WH OO 25/cs
 drawstring hood
 front zipper closure
 elastic wrists, ankles
 white
 SM-4X



labcoat

SR213S BU OO 30/cs
 laydown collar
 five snap front
 elastic wrists
 two pockets
 full length
 blue
 SM-4X



labcoat

SR219S WH/BU OO 30/cs
 knit collar
 six snap front
 knit cuffs
 three pockets
 full length
 white/blue
 SM-4X



For the DuPont Controlled Environments line of garments, small to 4X are identified as stock items. **Sizes 5X and above are identified as Make to Order.** Certain accessory items are also identified as Make to Order. Stock/Make to Order designations are based on sales volume and production efficiencies. Therefore, designations are subject to change without notice.

frock

SR267S WH OS 30/cs
SR267S WH OO 30/cs
mandarin collar
five snap front
elastic wrists
no pockets
white
SM-4X



frock

SR269S BU OO 30/cs
mandarin collar
six snap front
elastic wrists
no pockets
blue
SM-4X



frock

SR271S WH OS 30/cs
SR271S WH/BU OO 30/cs
mandarin collar
front zipper closure
elastic wrists
no pockets
full length
white/blue
SM-4X



boot covers

SR446S WH OO 100/cs
elastic top at leg opening
18" high Suprel® LS upper
ankle ties
Gripper™ soles
white
SM-XL



boot covers

SR447S WH OS 100/cs
SR447S WH/BU OO 100/cs
elastic top at leg opening
18" high Suprel® LS upper
elastic ankles
Gripper™ soles
white/blue
SM-2X (OS)
SM-XL (OO)



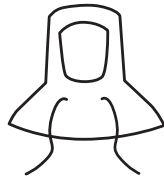
shoe covers

SR442S WH OO 100/cs
elastic ankles
Gripper™ soles
white
SM-XL



full-face hood

SR663B WH OS 100/cs
full-face opening
safety stitch construction
side ties
universal size
white



Bound and sewn-in seams and closures have less barrier than fabric.

NOTE: All sizes not available in all styles.

WARNING: Cleanroom apparel should not be used around heat, flames, sparks or in potentially flammable or explosive environments. Cleanroom fabrics should have slip-resistant materials on the outer sole of boots, shoe covers or other garment surfaces in conditions where slipping could occur.



PC122S

PROCLEAN®

- Microporous laminate fabric technology
- Non-hazardous liquid and dry particulate barrier protection for cleanroom applications
- Serged seams
- Choose from:
 - OC** = Clean: clean processed, individually packaged
 - OB** = Bulk packaged

coverall

- PC143S OC** 25/cs
PC143S OB 25/cs
 serged seams
 bound neck
 front zipper closure
 tunneled elastic wrists, ankles
 tunneled elastic waist
 SM-4X



coverall

- PC122S OC** 25/cs
PC122S OB 25/cs
 serged seams
 attached hood
 tunneled elastic face opening
 adjustable snap closure at chin
 front zipper closure
 tunneled elastic wrists, ankles
 tunneled elastic waist
 attached socks*
 SM-3X (OC)
 SM-4X (OB)



frock

- PC270S OC** 30/cs
PC270S OB 30/cs
 serged seams
 bound neck
 five snap front
 tunneled elastic wrists
 full-length
 SM-4X



frock

- PC271S OB** 30/cs
 serged seams
 bound neck
 front zipper closure
 tunneled elastic wrists
 full-length
 SM-4X



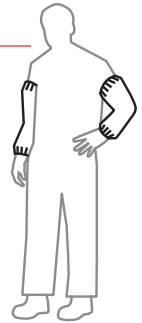
boot covers

- PC444S OC** 50 pr/cs
PC444S OB 50 pr/cs
 PVC soles
 tunneled elastic ankles
 SM-XL



sleeve protector

- PC500S OC** 100 pr/cs
PC500S OB 100 pr/cs
 18" length
 tunneled elastic wrists
 universal size



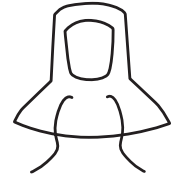
gown

- PC701S OB** 300/cs
PC701S OC 300/cs
 open back
 waist ties
 tunneled elastic wrists
 SM-4X



full-face hood

- PC663S OC** 100 pr/cs
PC663S OB 100 pr/cs
 full-face opening
 side ties
 universal size



Bound and sewn-in seams and closures have less barrier than fabric.

NOTE: All sizes not available in all styles.

WARNING: Cleanroom apparel should not be used around heat, flames, sparks or in potentially flammable or explosive environments. Cleanroom fabrics should have slip-resistant materials on the outer sole of boots, shoe covers or other garment surfaces in conditions where slipping could occur

**These ProClean® garments have attached socks made of the garment material. These attached socks must be worn inside protective outer footwear and are not suitable as outer footwear. These attached socks do not have adequate durability or slip resistance to be worn as the outer foot covering.*

Tyvek® boot covers

IC447S CS 50 pr/cs
IC447S OC 50 pr/cs
IC447S OB 50 pr/cs
 elastic top at leg opening
 18" high Tyvek® uppers
 elastic ankles
 Gripper® soles
 MD-XL



Tyvek® boot covers

IC446S CS 50 pr/cs
IC446S OC 50 pr/cs
IC446S OO 50 pr/cs
 elastic top at leg opening
 18" high Tyvek® uppers
 ankle ties
 Gripper® soles
 MD-XL



Tyvek® shoe covers

IC442S CS 50 pr/cs
IC442S OC 50 pr/cs
IC442S OB 50 pr/cs
 elastic ankles
 Gripper® soles
 MD-XL



Suprel® LS boot covers

SR446S WH OO 100 pr/cs
 elastic top at leg opening
 18" high Suprel® LS upper
 ankle ties
 Gripper® soles
 white
 MD-XL



Suprel® LS boot covers

SR447S WH/BU OO 100 pr/cs
 elastic top at leg opening
 18" high Suprel® LS upper
 elastic ankles
 Gripper® soles
 white/blue
 MD-XL



Suprel® LS shoe covers

SR442S WH OO 100 pr/cs
 elastic ankles
 Gripper® soles
 white
 SM-XL



IC446S

GRIPPER™ SOLE

- A premium durable, slip-resistant solution for your cleanroom
- An embossed sole—highly engineered PVC material
- Reinforced with a coarsely textured interior—so your feet stay put on the inside as well as the outside
- Abrasion- and fluid-resistant sole for safety and extended life
- Openings are extra wide for easy donning and doffing
- Choose from:
 - CS** = Clean and Sterile: individually packaged and sterilized by gamma irradiation
 - OC** = Clean: clean processed, individually packaged
 - OO** or **OB** = Bulk packaged
 - WH** = White
 - BU** = Blue

For the DuPont Controlled Environments line of garments, medium to 4X are identified as stock items. **Sizes small and 5X and above are identified as Make to Order.** Certain accessory items are also identified as Make to Order. Stock/Make to Order designations are based on sales volume and production efficiencies. Therefore, designations are subject to change without notice.



PE440S

SURESTEP™

- A unique polyethylene extrusion coating
- High slip resistance both wet and dry
- Tear-resistant for better durability
- Low linting, resists delamination
- Generous sizing to accommodate all shoe sizes
- Available with a conductive strip for electrostatic grounding
- Choose from:
 - OO** = Bulk packaged
 - CT** = Conductive strip
 - WH** = White
 - BU** = Blue

shoe covers

PE440S WH OO 100 pr/cs
 seamless bottom
 fluid-resistant
 skid-resistant
 white
 LG-XL



shoe covers

PE440S BU OO 100 pr/cs
 seamless bottom
 fluid-resistant
 skid-resistant
 blue
 LG-XL



shoe covers

PE440S WH CT 100 pr/cs
 conductive strip
 fluid-resistant
 skid-resistant
 white
 LG-XL



ankle-high shoe covers

PE444S WH OO 50 pr/cs
 fluid-resistant
 skid-resistant
 12" high
 white
 LG-XL



Bound and sewn-in seams and closures have less barrier than fabric.

NOTE: Not all sizes available in all styles.

WARNING: Cleanroom apparel should not be used around heat, flames, sparks or in potentially flammable or explosive environments. Cleanroom fabrics should have slip-resistant materials on the outer surface of boots, shoe covers or other garment surfaces in conditions where slipping could occur.

For the DuPont Controlled Environments line of garments, small to 4X are identified as stock items.

Sizes 5X and above are identified as Make to Order. Certain accessory items are also identified as Make to Order. Stock/Make to Order designations are based on sales volume and production efficiencies. Therefore, designations are subject to change without notice.

comfort mask

ML7310 BU BB 300/cs, 50/bag
7"
blue rayon outer facing
polypropylene ties
blue

general mask

ML7330 BU BB 350/cs, 50/box
ML7330 BU BH 500/cs, 50/bag
7"
blue polypropylene outer facing
ear loops
blue

controlled environment mask

ML7390 WH BH 300/cs, 50/bag, 7"
ML7360 WH BH 250/cs, 50/bag, 9"
white rayon outer facing
Tyvek® ties
white

anti-fog mask

ML7300 WH BB 250/cs, 50/box
ML7300 WH BH 250/cs, 50/bag
7"
white rayon outer facing
polypropylene ties
white

ML7370 WH BH 250/cs, 50/bag
9"
white rayon outer facing
Tyvek® ties
white

sterile mask

ML7300 WH OS 250/cs, 1/bag
7"
white rayon outer facing
polypropylene ties
white

ML7370 WH OS 250/cs, 1/bag
ML7360 WH OS 250/cs, 1/bag
9"
white rayon outer facing
Tyvek® ties
white



ML7360

SIERRA®

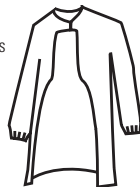
- Bacteria and particle filtration efficacy
- Comfortable
- Available in 7" and 9" styles
- Low pressure drop for high breathability
- Choose from:
 - OS** = sterile
 - BB** = 50/box
 - BH** = 50/bag
 - WH** = White
 - BU** = Blue

NOTE: Not for respiratory protection.

General purpose products

protective gown

PP701F OO 50/cs, 10/bag
splash resistant
polyethylene-coated front and arms
breathable back
knit cuffs
universal size
bulk



sleeve protector

QC500B OB 100 pr/cs, 50/bag
bound seams
tunneled elastic wrists
18" length
universal size
bulk



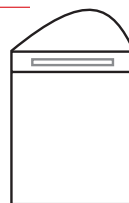
cleanroom face veil

PP7400 BH 150/cs, 50/bag
stainless steel snaps
metal nose piece



cleanroom face veil

PP7410 BH 150/cs, 50/bag
elastic headband
metal nose piece





antiseptic hand spray

99084-001

2-oz. spray bottle



antiseptic hand wipes

99085-001

160-count canisters

F297

canister holder brackets
(not shown)



ANTISEPTICS AND DISINFECTANTS

Effective solutions for personal protection

DuPont, long recognized for providing outstanding protection with brands like Nomex®, Kevlar®, ProShield®, Tyvek® and Tychem®, also provides protection with a high-performance family of antiseptics and disinfectants.

**DUPONT™ RELYON™
ANTISEPTIC HAND WASH PRODUCTS**

- Kills 99.9% of germs
- Available as personal-sized spray bottles, canisters of wipes and individual wipes
- No sticky residue, allows for easy gloving

These ready-to-use products offer an easy and effective way to disinfect hands and reduce the spread of germs and bacteria. Antiseptic hand wash products are based on a proprietary (patented) formulation that contains a skin-softening ingredient to help protect hands from drying. Select from a 2-oz. personal-size spray bottle, individual hand wipes that you can carry in your pocket, or 160-count canister dispensers of hand wipes. Not yet available in Canada.

**DUPONT™ RELYON™
BROAD SPECTRUM DISINFECTANT PRODUCTS**

- Effective as a hard surface disinfectant against a wide range of pathogens
- Compatible with most surfaces
- Cleans and disinfects in one step

Disinfectant spray and wipes

DuPont™ RelyOn™ disinfectant spray and wipes are isopropanol-based, ready-to-use products that are compatible with most surfaces and leave no residuals. Disinfectant sprays and wipes, when used as directed, are tuberculocidal, bacteriocidal, virucidal and fungicidal. The disinfectant solution is efficacious against a range of human pathogens including Hepatitis A, B and C; MRSA VRE; influenza; RSV and TB. (See our web site at www.PersonalProtection.DuPont.com for a complete listing along with efficacy data.) These products are available in a 16-oz. spray bottle with one gallon refills or in convenient canisters containing 65 wipes and have a shelf life of four years.

Multi-Purpose Disinfectant Cleaner

DuPont™ RelyOn™ Multi-Purpose Disinfectant Cleaner is a peroxygen-based powder or tablet available in a variety of package sizes that may be used as an absorbent or dissolved in water to provide a disinfectant solution. This cost-effective bleach alternative, when prepared as a 1% working solution, is efficacious against a range of human pathogens including Hepatitis A, B and C. (See our web site at www.PersonalProtection.DuPont.com for a complete listing along with efficacy data.) In cases of incidental exposure, in-use solution is non-irritating to intact skin or eyes. These products are available in a 5 kg. bucket, a 500 g. shaker, a 50 g. sachet and a 10- or 50-count of 5 g. tablets. The tablets have an established shelf life of greater than two years and the powder has a shelf life of three years.

antiseptic hand wipes

D900
individual packets



disinfectant spray

99082-001
16-oz. spray bottle



disinfectant solution

99087-001
1 gallon bottle
(refill for spray bottle
or instrument pre-soak)



disinfectant wipes

D935
65-count canisters
10" X 12" wipes



F298
canister holder brackets
(not shown)

multi-purpose disinfectant cleaner

D922 5 kg bucket (shown)
D923 500 g shaker (shown)
D924 50 g sachet
D925 10-count 5 g tablet
D926 50-count 5 g tablet



wall-mount disinfectant dispensers

D13294584
automatic



D13294573
manual



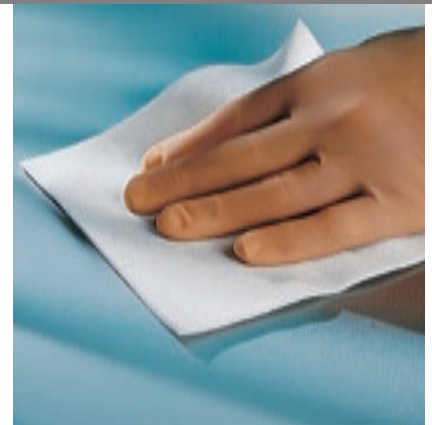
DuPont™ Sontara® wipes

DUPONT™ SONTARA® MICRO-LEVEL CLEANING WIPES

DuPont™ Sontara® micro-level cleaning fabrics are high-performance, absorbent wipes for cleanrooms. Because they are made using the DuPont hydroentangling process, where needle-like water jets form a strong, nonwoven fabric without any binders, these fabrics are ideally suited for cleanroom use.

DuPont™ Sontara® micro-level cleaning fabrics have low particle generation and are inherently absorbent. With low extractables and ion content properties, as well as strength and resistance to solvents, wipes made of DuPont™ Sontara® are a smart solution for your cleanroom requirements.

Wiping needs and required levels of cleanliness differ—even in the same cleanroom—therefore DuPont created a range of Sontara® micro-level cleaning fabrics. It's best to find a match between application and the wipe fabric for efficiency and cost effectiveness. To determine which Sontara® micro-level cleaning fabric best meets your controlled environment application, visit www.Sontara.com or call 1-888-4-Sontara (1-888-476-6827).



Gown specifications

SEAM CONSTRUCTION

Even the best protective fabrics are useless without strong, tight seams.



Serged or sewn

A seam produced when three threads are interlocked around the raw edges of two pieces of material for a strong, stress-resistant seam.



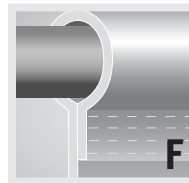
Welded or NSR

A sealed seam produced when materials are lapped and thermally welded. There are no fillers, thread or needle holes.



Bound

Tightly sewn with a reinforced outer binding to increase seam strength and barrier. For potential misting exposure of non-hazardous liquids or particle penetration through the seam.



Tunneled elastic

Fabric sewn tightly together to provide a secure closure.

ISO 16644-1 AIR CLEANLINESS CLASSES FOR CLEANROOMS AND CLEAN ZONES

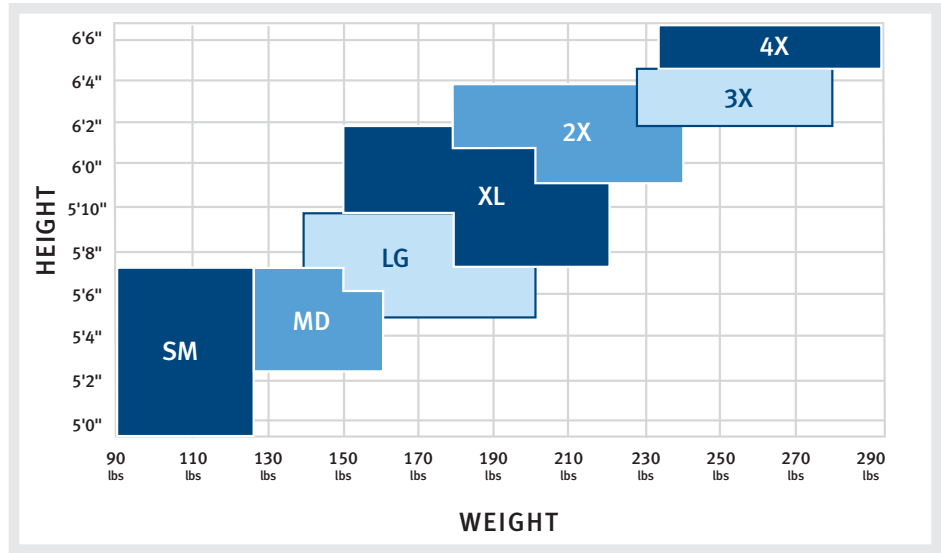
ISO Classification Number	0.1 µm	0.2 µm	0.3 µm	0.5 µm	1.0 µm	5.0 µm	SI	English Former FED-STD-209E
ISO Class 1	10	2						
ISO Class 2	100	24	10	4				
ISO Class 3	1000	237	102	35	8		M 1.5	1
ISO Class 4	10000	2370	1020	352	83		M 2.5	10
ISO Class 5	100000	23700	10200	3520	832	29	M 3.5	100
ISO Class 6	1000000	237000	102000	35200	8320	293	M 4.5	1000
ISO Class 7				352000	83200	2930	M 5.5	10000
ISO Class 8				3520000	832000	29300	M 6.5	100000
ISO Class 9				35200000	8320000	293000		

MINIMUM GOWNING REQUIREMENTS

	ISO Class 8 (Class 100,000)	ISO Class 7 (Class 10,000)	ISO Class 6 (Class 1,000)	ISO Class 5 (Class 100)	ISO Class 8 (Class 10)
Hair cover	•	•	•	•	•
Hood				•	•
Face mask		•	•	•	•
Frock	•	•			
Coverall			•	•	•
Shoe covers	•	•	•	•	•
Boots				•	•

**SIZING CHART FOR
DUPONT CONTROLLED
ENVIRONMENTS GARMENTS**

Use this chart to determine what size DuPont Controlled Environments garment is right for you. Sizes are based on an individual's height and weight.



NATURAL RUBBER LATEX

As of January 1, 2006, all DuPont garments are manufactured under specifications that exclude components containing natural rubber latex. However, anyone who begins to exhibit allergic response during the use of DuPont products should immediately cease using these products. The incident should also be reported to DuPont at 1-800-441-3637 so that an investigation can be initiated.

SILICONE OILS

In the past, DuPont has found that threads and zippers can be the most significant source of silicone oil contamination in garments. DuPont specifies that threads and zippers used in Tyvek® IsoClean®, Suprel® LS and ProClean® garments be manufactured without the use of silicone oils. DuPont cannot guarantee the absence of silicone oils on these garments.

For end users with concerns about contamination with silicone oils or any other contaminants, the best practice is to audit in-bound materials, including garments, for those contaminants.

This information is based upon technical data that DuPont believes to be reliable. It is subject to revision as additional knowledge and experience are gained. DuPont makes no guarantee of results and assumes no obligations or liability in connection with this information. It is the user's responsibility to determine the level of toxicity and the proper personal protective equipment needed.

The information set forth herein reflects laboratory performance of fabrics, not complete garments, under controlled conditions. It is intended for information use by persons having technical skill for evaluation under their specific end-use conditions, at their own discretion and risk.

Anyone intending to use this information should first verify that the garment selected is suitable for the intended use. In many cases, seams and closures have shorter breakthrough times and higher permeation rates than the fabric. If fabric becomes torn, abraded or punctured, end user should discontinue use of garment to avoid compromising the barrier protection. **SINCE CONDITIONS OF USE ARE OUTSIDE OUR CONTROL, WE MAKE NO WARRANTIES, EXPRESSED OR IMPLIED, INCLUDING WITHOUT LIMITATION, NO WARRANTIES OF MERCHANTABILITY OR FITNESS FOR A PARTICULAR USE AND ASSUME NO LIABILITY IN CONNECTION WITH ANY USE OF THIS INFORMATION.** This information is not intended as a license to operate under or a recommendation to infringe any patent, trademark or technical information of DuPont or others covering any material or its use. **WARNINGS: 1)** Tyvek® and Suprel® LS are not flame-resistant and should not be used around heat, flame, sparks or potentially flammable or explosive environments. **2)** Garments made of Tyvek® and Suprel® LS should have slip-resistant or antislip materials on the outer surface of boots, shoe covers or other garment surfaces in conditions where slipping could occur.

Customer Service:

United States 1.800.931.3456

Canada 1.800.387.2122

Mexico 01800 849 75 14 or 5722 1150

For DuPont Controlled Environments apparel and accessories, visit
www.PersonalProtection.DuPont.com

For Sontara® wiping products, visit
www.Sontara.com



The miracles of science™